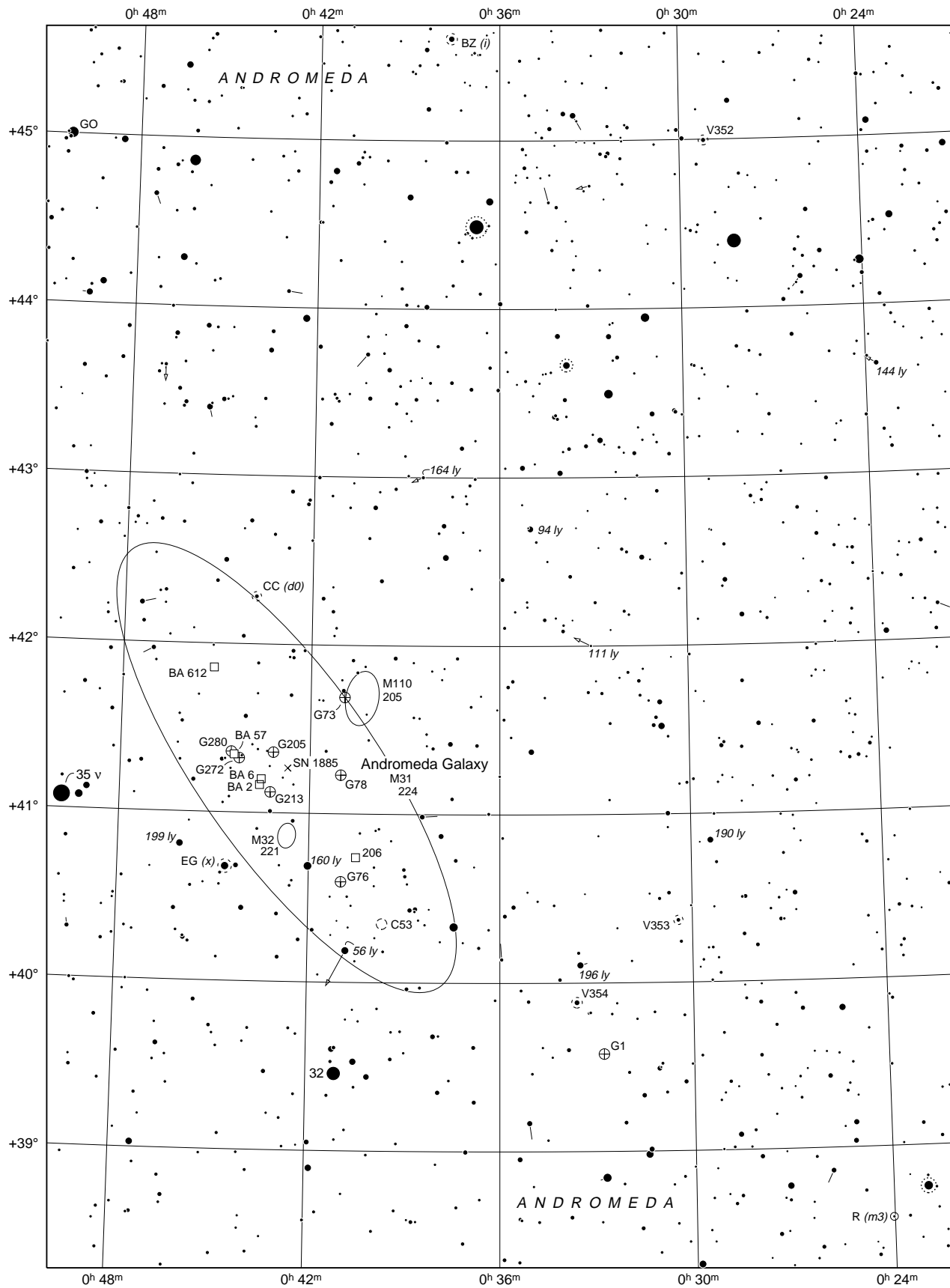


# Sample Pages from The Millennium Star Atlas

+42°

MILLENNIUM STAR ATLAS

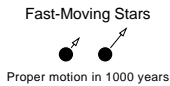
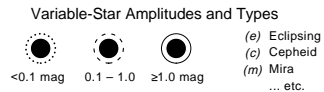
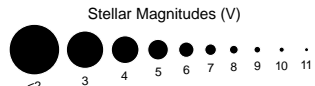


©1997 Sky Publishing Corporation

Reference system: ICRS (consistent with equinox J2000.0)

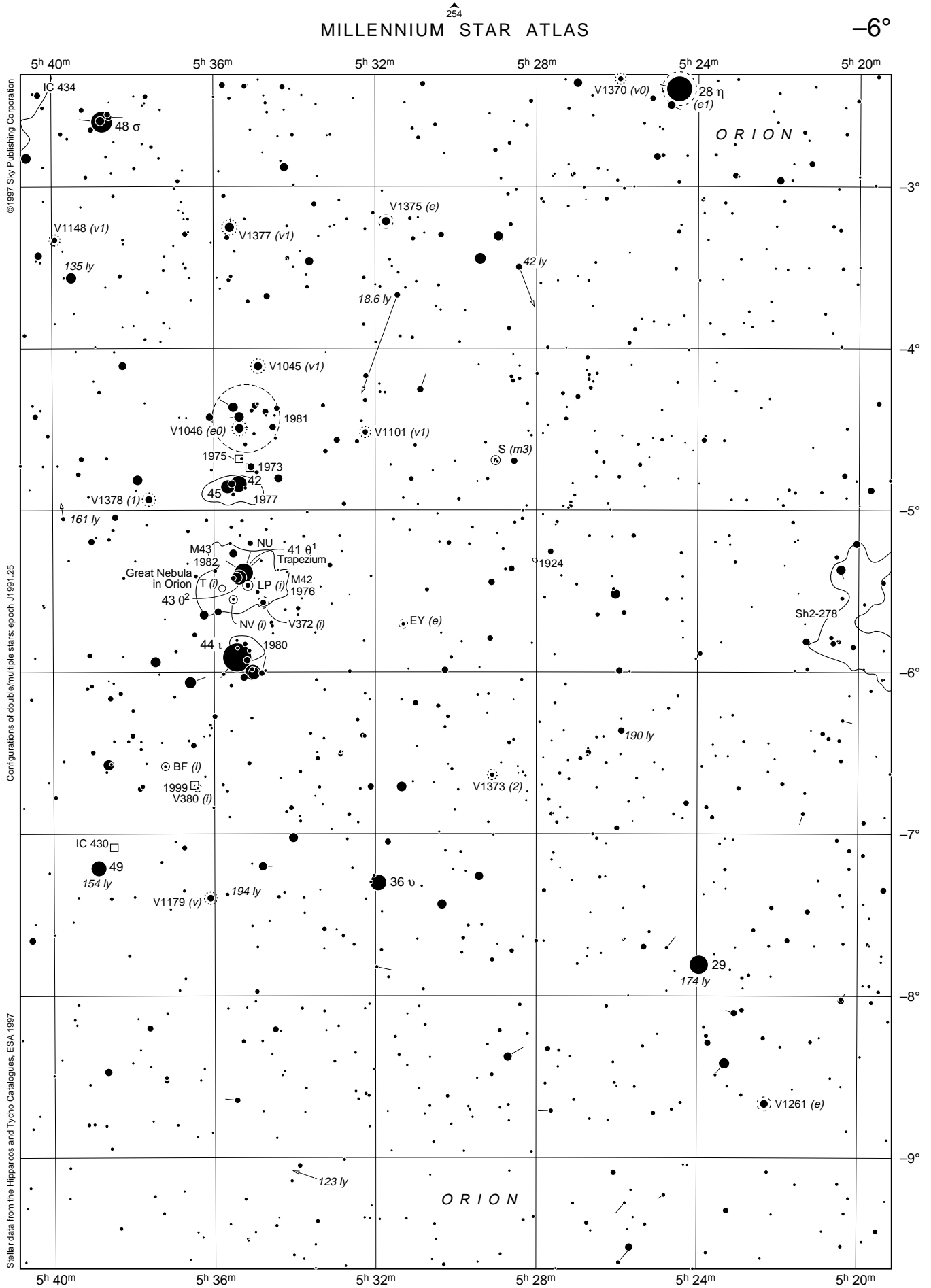
Stellar data from the Hipparcos and Tycho Catalogues, ESA 1997

105



MILLENNIUM STAR ATLAS

-6°



©1997 Sky Publishing Corporation

Configurations of double/multiple stars: epoch J1991.25

Stellar data from the Hipparcos and Tycho Catalogues, ESA 1997

Bright and Dark Nebulae To scale <10'

Planetary Nebulae >100' 100'-30' <30'

Open Star Clusters

Globular Clusters To scale <5'

Galaxies

10' x 5' 6' x 1' 3' x 2' 5' x 5' 4' x 2' 2' x 1'

Quasars

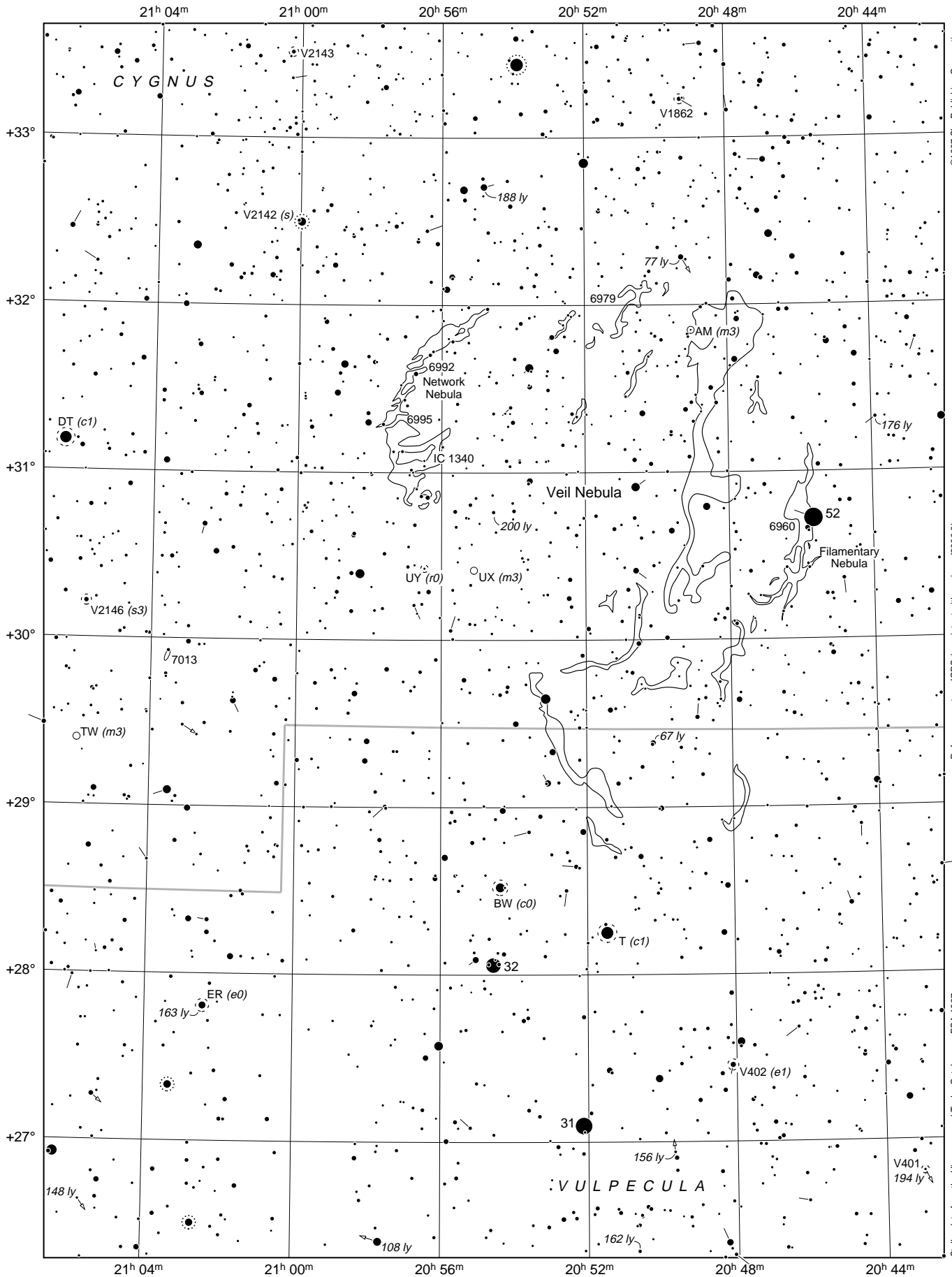
Galaxy Clusters

Plotted to scale if the major axis >2', and circular when face on or the position angle is uncertain

+30°

# MILLENNIUM STAR ATLAS

1147



©1997 Sky Publishing Corporation

Reference system: ICRS (consistent with equinox J2000.0)

Stellar data from the Hipparcos and Tycho Catalogues, ESA 1997

**1169**

**Stellar Magnitudes (V)**

● ≤2   ● 3   ● 4   ● 5   ● 6   ● 7   ● 8   ● 9   ● 10   ● 11

**Variable-Star Amplitudes and Types**

○ <0.1 mag   ○ 0.1 - 1.0   ○ ≥1.0 mag

(e) Eclipsing  
(c) Cepheid  
(m) Mira  
... etc.

**Fast-Moving Stars**

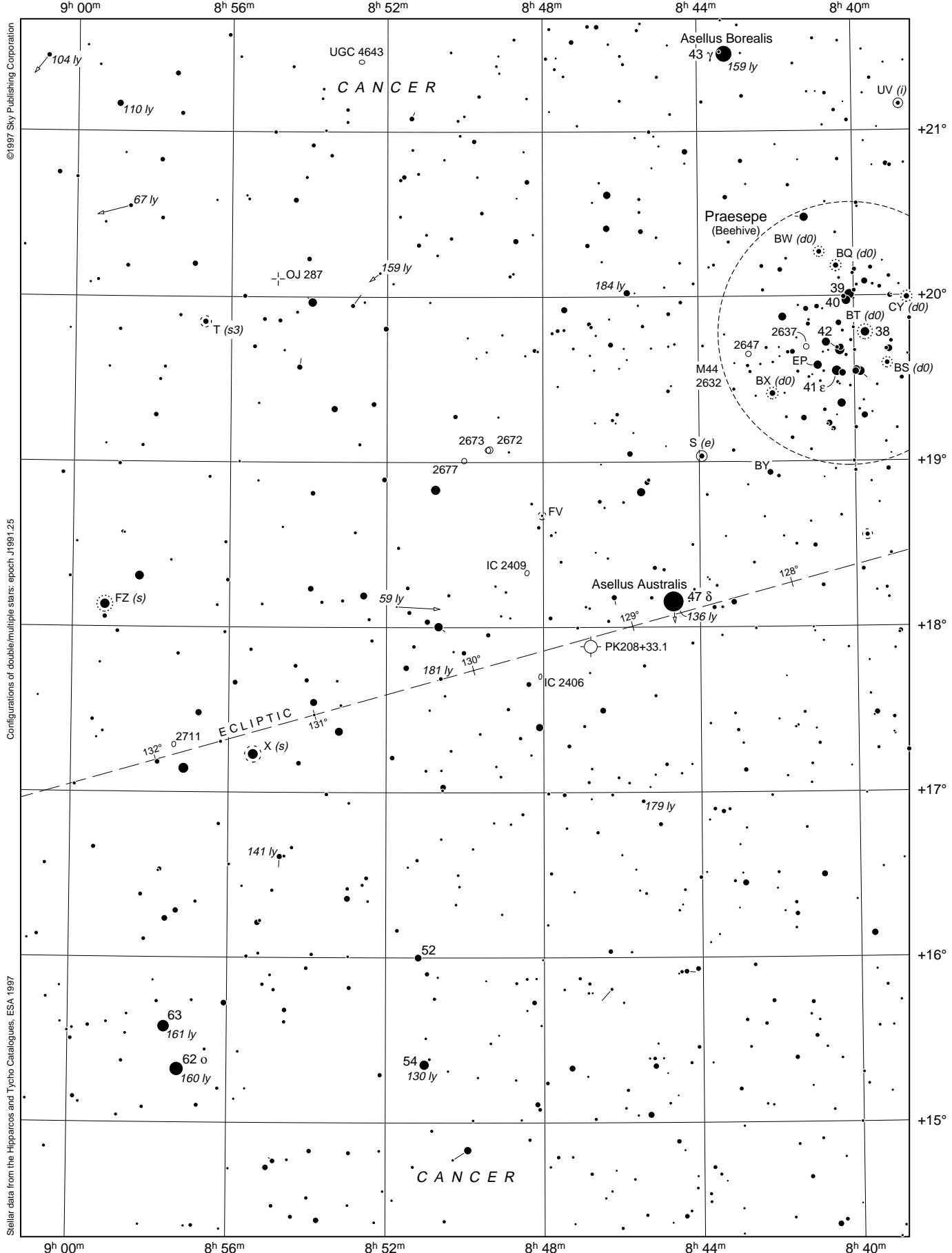
↗ ↘ Proper motion in 1000 years

**Double-Star Separations**

● ● 0.3"   ● ● 3"   ● ● 30"

688  
MILLENNIUM STAR ATLAS

+18°



©1997 Sky Publishing Corporation

Configurations of double/multiple stars: epoch J1991.25

Stellar data from the Hipparcos and Tycho Catalogues, ESA 1997

- Bright and Dark Nebulae To scale <10"
- Planetary Nebulae >100" 100"-30" <30"

- Open Star Clusters To scale <5"
- Globular Clusters To scale <5"

- Galaxies 10' x 5' 6' x 1' 3' x 2' 5' x 5' 4' x 2' 2' x 1'
- Plotted to scale if the major axis >2', and circular when face on or the position angle is uncertain

- Quasars
- Galaxy Clusters